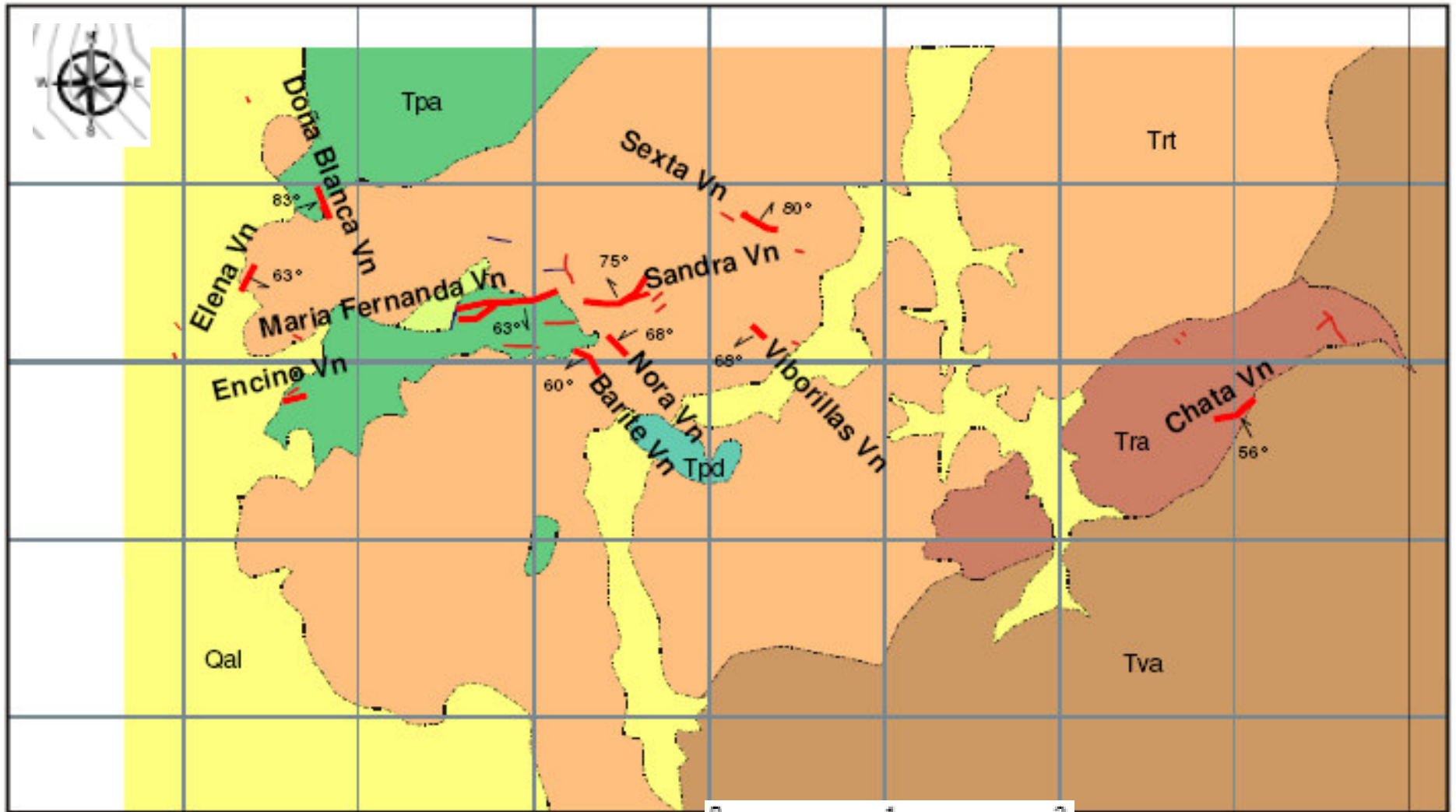




Canasil Resources Inc.
Minera Canasil S.A. de C.V.

Sandra Project
Durango State, Mexico
Sampling & Trenching Program





EXPLANATION

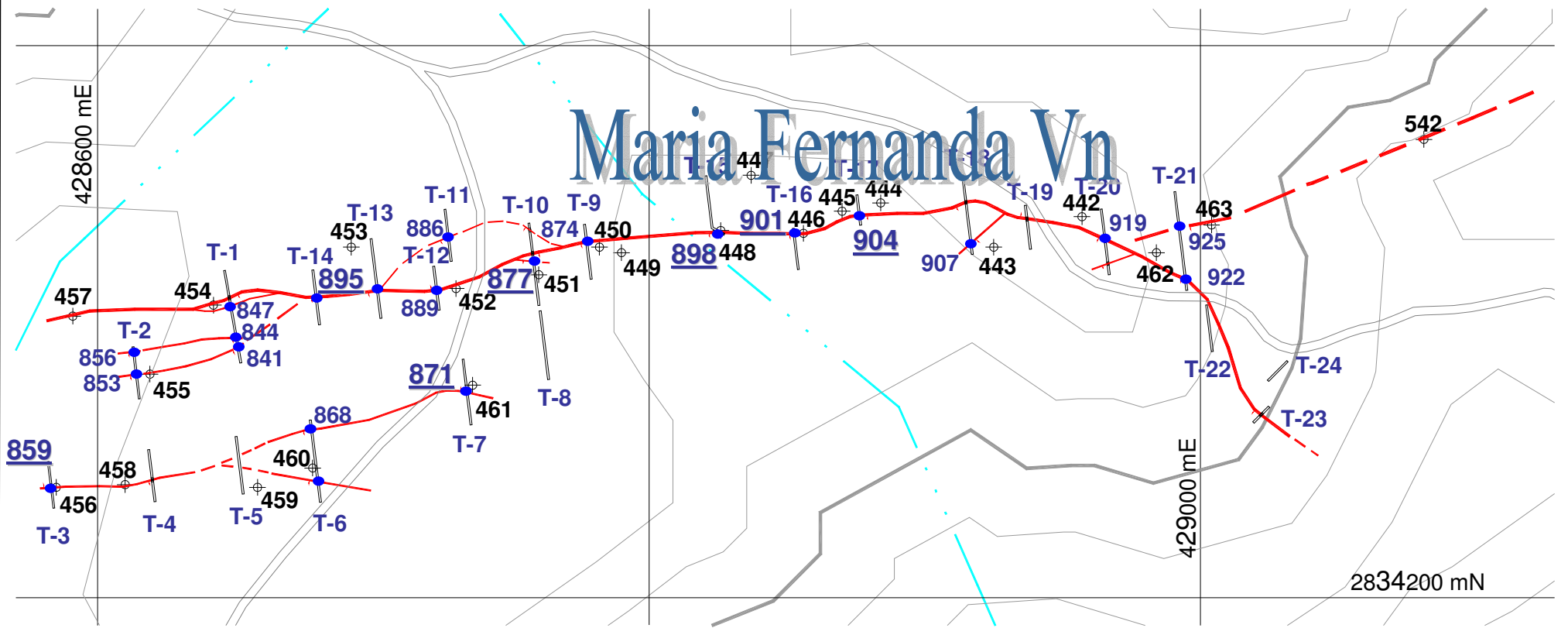
- | | |
|-------------------------------------|---------------------------------|
| Qal Alluvium | Tpa Porphyritic Andesite |
| Tpd Porphyritic Dacite | Tra Rhyodacitic Ash Tuff |
| Tan Layered Andesite | Tva Vitric Ash Tuff |
| Trt Crystall-Lithic Rhyolite | |

- Inferred Vein Showing Dip**
- Fault Showing Dip**
- Aproximate Geologic Contact**



Minera Canasil, S.A de C.V.
SANDRA PROJECT
 Municipality of Tepehuanes, Durango
 Local Geologic Map

Maria Fernanda Vn



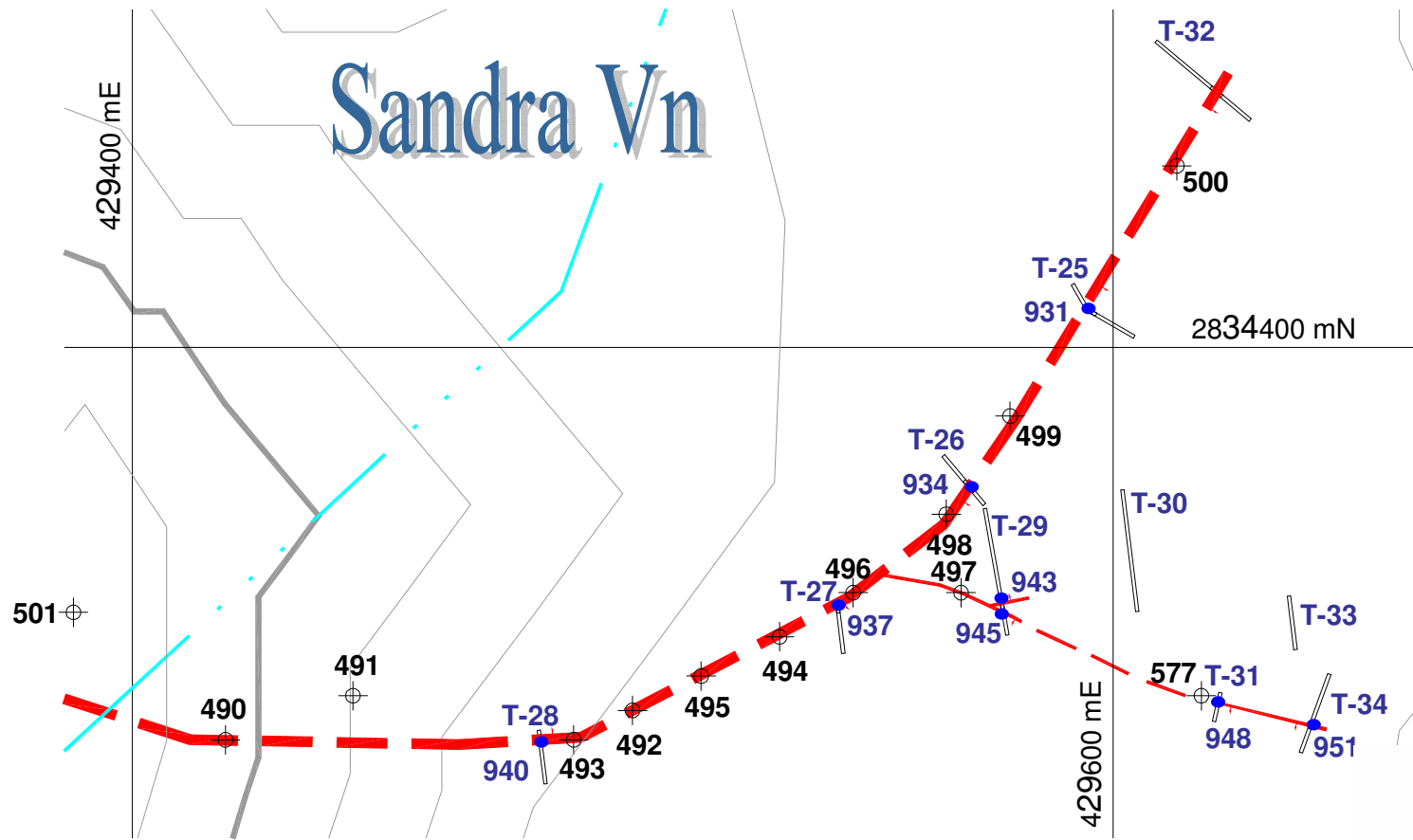
SAMPLE NUMBER	Width m	TRENCH	Au ppm	Ag ppm	Cu ppm	Pb ppm	Zn ppm
841	0.3	T-1	0.615	8.1	226	265	105
844	0.3	T-1	0.631	8.3	2340	199	422
847	0.3	T-1	0.062	11.9	362	153	492
853	0.3	T-2	0.736	24.8	2650	872	569
856	0.3	T-2	0.396	35.4	1220	761	515
859	0.7	T-3	1.22	406	2490	3080	2330
868	0.3	T-6	0.368	51.5	3720	535	314
871	0.6	T-7	6.06	87.5	3580	718	345
874	0.6	T-9	0.864	129	2840	2330	2750
877	0.3	T-10	1.175	119	1110	1005	523

SAMPLE NUMBER	Width m	TRENCH	Au ppm	Ag ppm	Cu ppm	Pb ppm	Zn ppm
886	0.3	T-11	0.099	13.2	1820	1310	1275
889	0.5	T-12	0.105	46.5	1155	1415	831
895	0.6	T-14	4.9	142	3120	1625	879
898	1.0	T-15	2.88	82.9	3240	1505	934
901	0.5	T-16	9.95	365	3040	1365	565
904	0.5	T-17	3.06	144	1235	1015	420
907	0.3	T-18	0.164	55.8	1570	683	755
919	0.7	T-20	0.32	58.6	3550	5240	767
922	0.3	T-21	0.378	42.7	3460	30200	3120
925	0.3	T-21	0.098	27.7	866	1075	380



Minera Canasil S.A de C. V.

Sandra Project
Maria Fernanda Vein

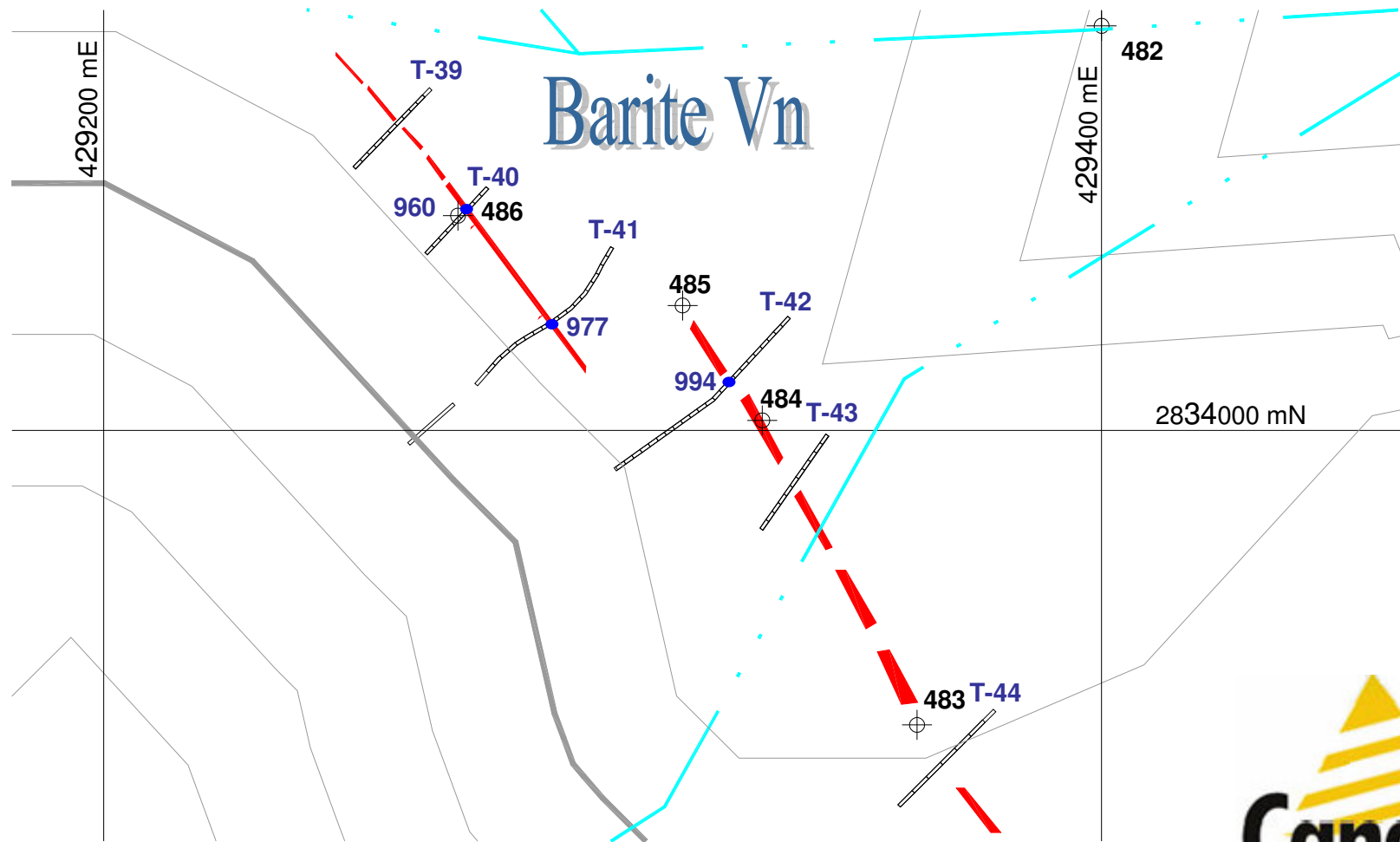


SAMPLE NUMBER	Width m	TRENCH	Au ppm	Ag ppm	Cu ppm	Pb ppm	Zn ppm
931	0.9	T-25	0.016	28	177	1655	110
934	1.0	T-26	0.006	14.9	179	3950	199
937	0.9	T-27	0.017	14	420	7270	454
940	1.0	T-28	0.037	36.2	477	4890	308
943	0.6	T-29	0.024	0.7	831	8310	928
945	0.7	T-29	0.033	9.7	1840	15300	2540
948	0.3	T-31	0.012	1.2	62	1075	450
951	0.4	T-34	0.007	1.5	22	863	571



Minera Canasil S.A de C. V.

Sandra Project
Sandra Vein



SAMPLE NUMBER	Width m	TRENCH	Au ppm	Ag ppm	Cu ppm	Pb ppm	Zn ppm
960	0.7	T-40	0.051	888	719	47500	1960
977	2.0	T-41	0.219	373	605	6660	995
994	2.0	T-42	0.009	6.2	74	2330	1975

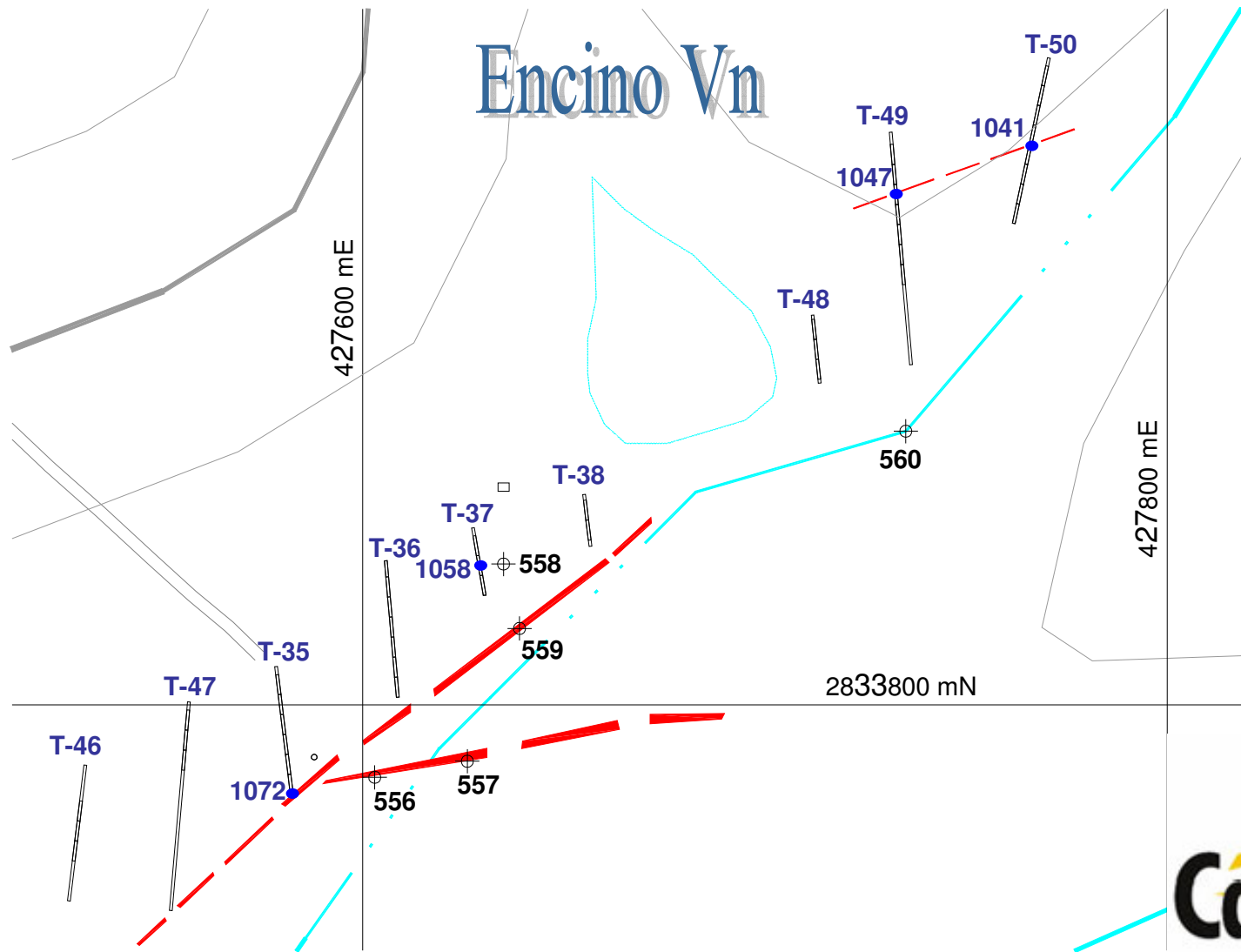


Minera Canasil S.A de C. V.

Sandra Project

Barite Vein

Encino Vn



SAMPLE NUMBER	Width m	TRENCH	Au ppm	Ag ppm	Cu ppm	Pb ppm	Zn ppm
1041	5.0	T-50	0.007	18	28	1770	854
1047	5.0	T-49	0.007	7.7	18	2190	545
1058	5.0	T-37	0.005	0.5	5	20	28
1072	5.0	T-35	0.055	19.3	56	803	463

Minera Canasil S.A de C. V.

Sandra Project

Encino Vein



**Mineral dumps above the Barite vein
Sample 484, 0.06 g/t Au, 480 g/t Ag, 2.43% Pb, 0.3%Zn**



**Mineral dump above the Barite vein
Sample 485, 0.142 g/t Au, 253 g/t Ag, 2.36% Pb, 0.13% Zn**



**Fourth stop on the Barite vein
sample 486, 0.103 g/t Au, 636 g/t Ag, 9.16% Pb, 0.18% Zn**



Maria Fernanda vein outcrop with width of about 1.5 meters; vuggy quartz with galena, chalcopyrite, malachite and iron oxides. Sample 447, 2.82 g/t Au-139g/t Ag-0.5%Cu



Trenching at Sandra Project



Trenches over the María Fernanda vein



**Approximately 5 metres overburden covers the El Encino vein system.
Sample #556 113 g/t Ag over 4.7 metres**