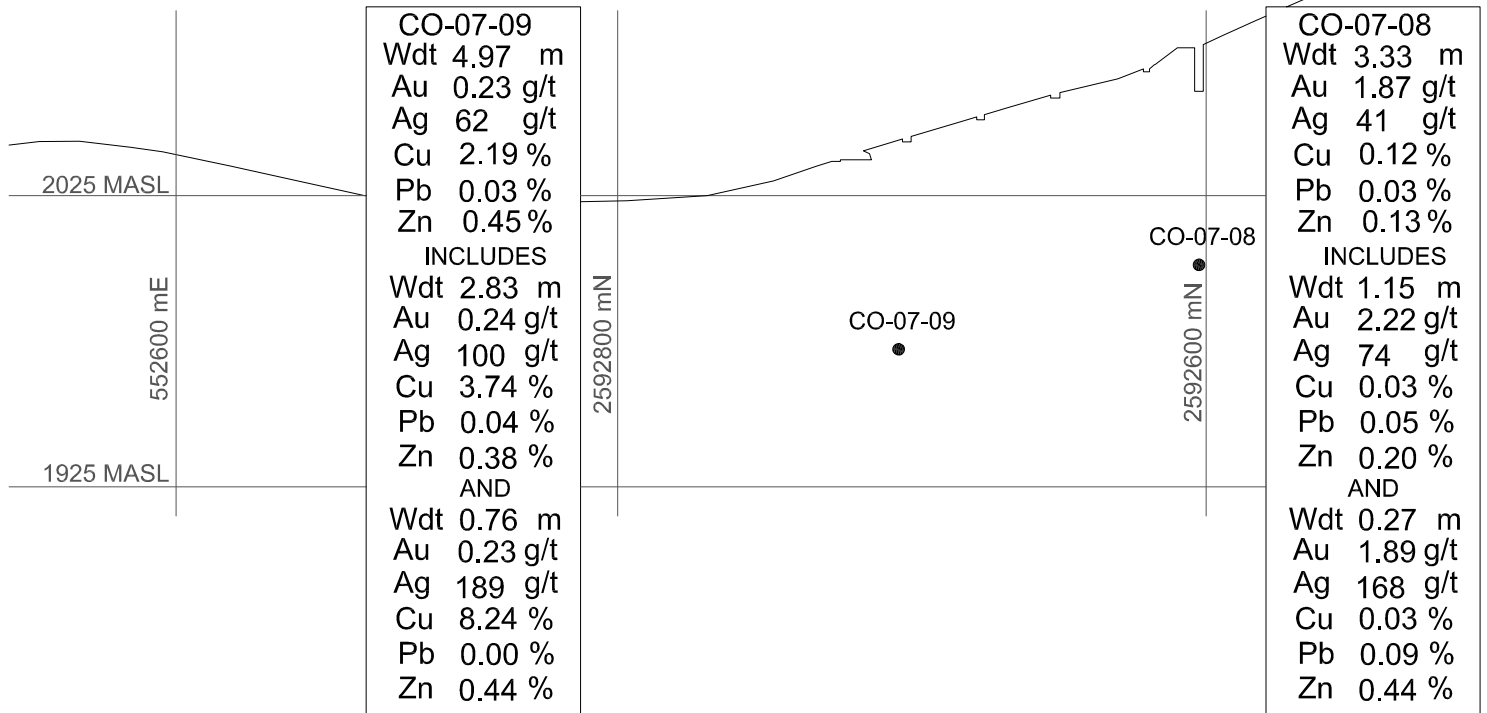
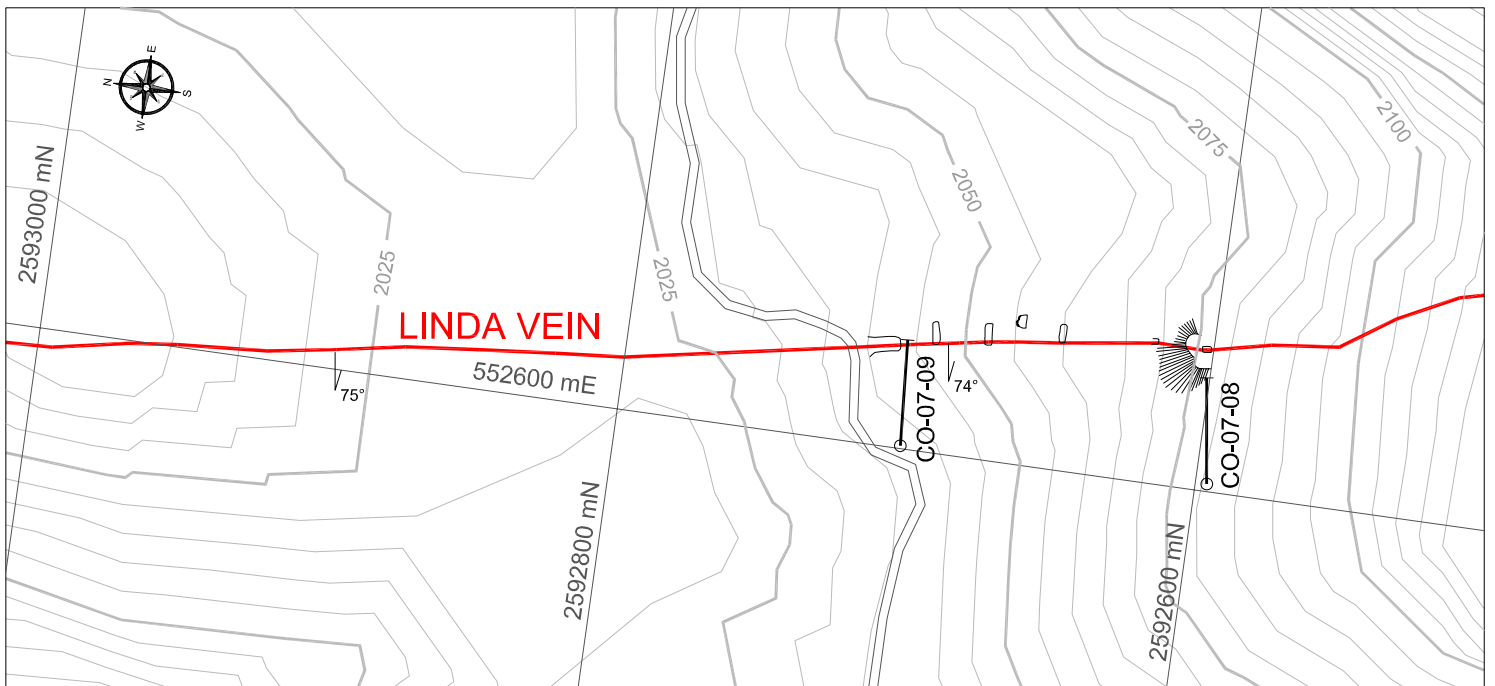


# LINDA VEIN LONGITUDINAL SECTION LOOKING TO N 82° E



## PLAN VIEW

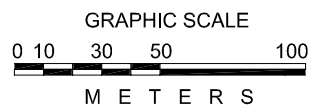


### EXPLANATION

Vein showing dip

Elevation - Meters

Complete Drill hole



	<b>MINERA CANASIL</b> S. A. DE C. V.
	COLIBRI PROJECT Durango, Mexico
	Linda Vein Plan View and Long Section
	Scale: 1:2,500 m      Figure:
<small>Date: Feb. 5, 2007 Updated: Mar. 7, 2007 Digitized by: L. B. R. C. Reviewed by: EEM - GES Approved: B. Yamini</small>	